



CCH2000-5 Luffing Jib Crane

IHI IHI Construction Machinery Limited
Kishi-Tokai Bldg., 8-4-4, Nishikamata, Ota-ku, Tokyo 144-8577, JAPAN
Phone: 81-3-5714-8844 Fax: 81-3-5714-8840, 8841

Specifications are subject to change without notice due to technical improvements or modifications.
Distributed by



REGISTERED FIRM
NO.0124-ISP 9001

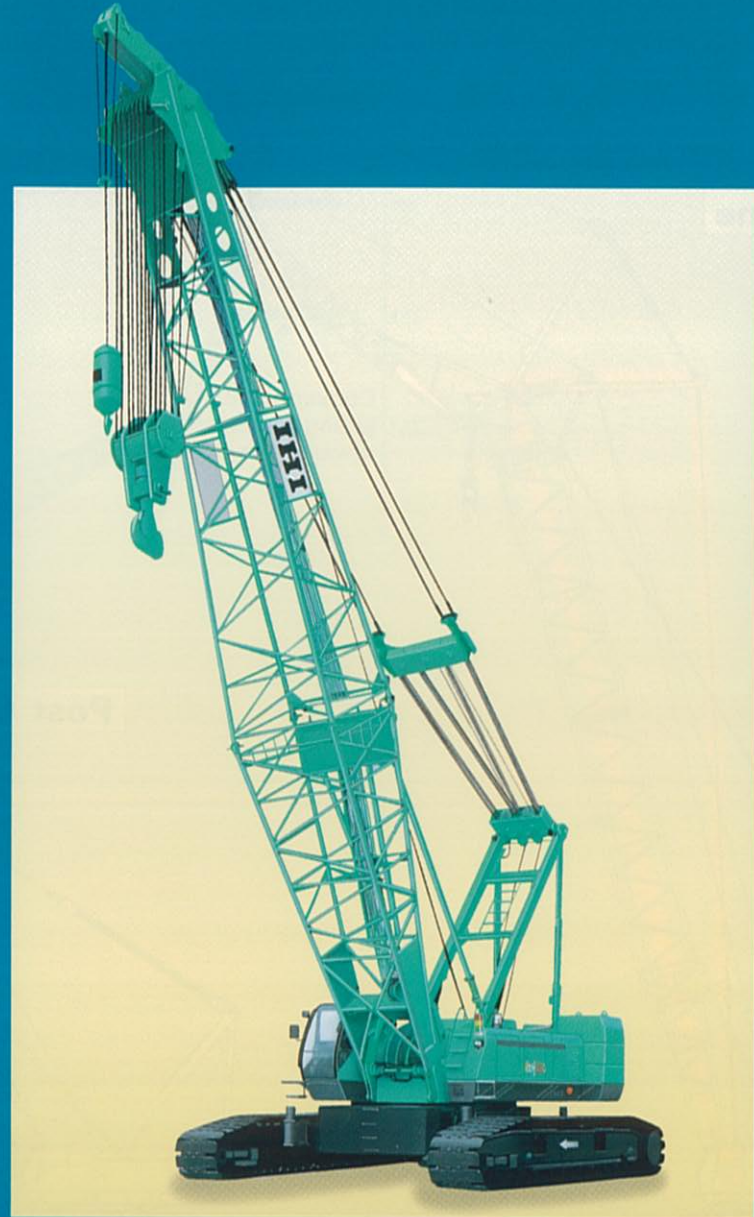
Printed in Japan
IK1219A0207LL10

IHI

cch2000

Fully Hydraulic Crawler Crane

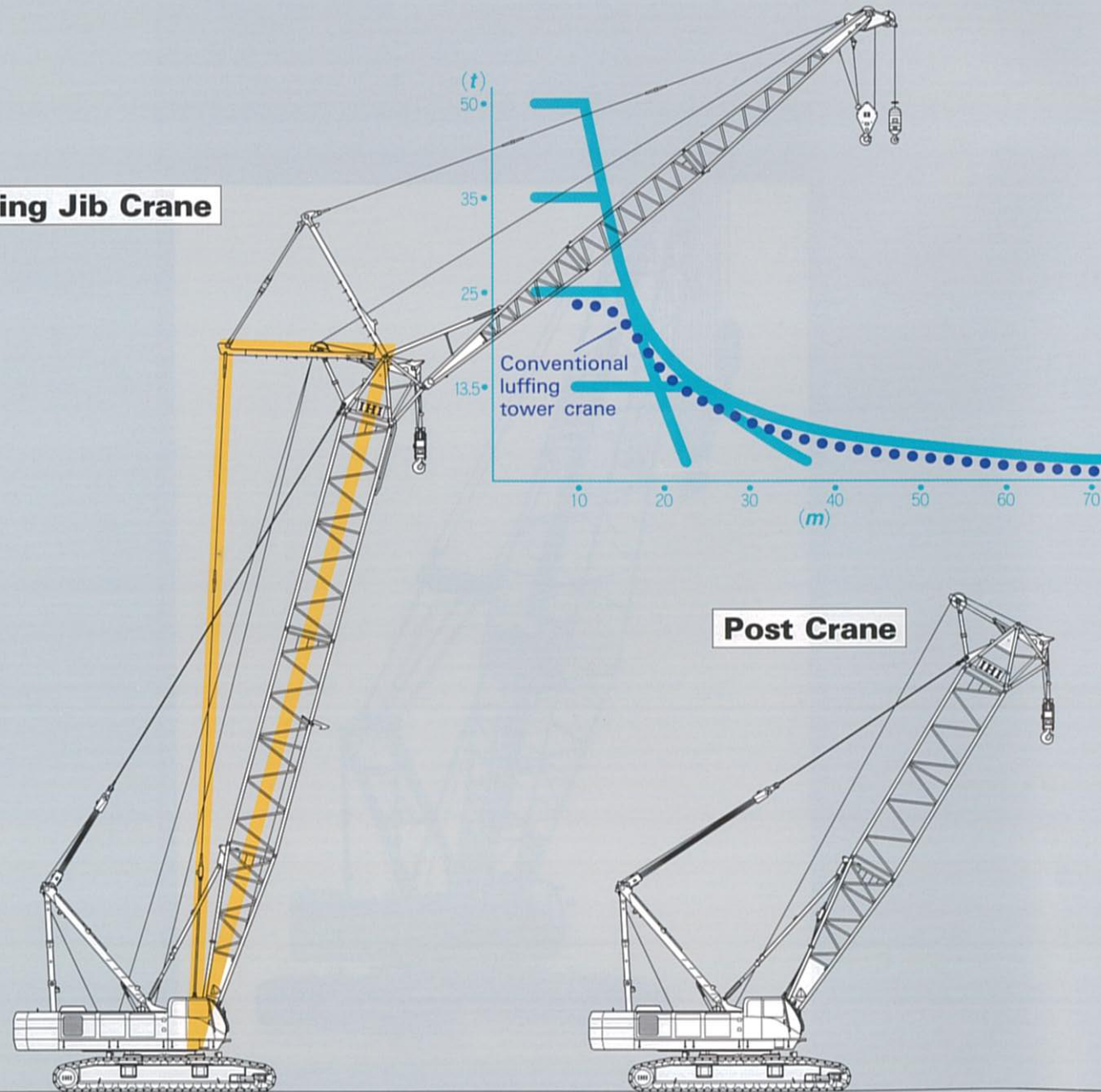
Lifting capacity 200 metric tons



IHI Construction Machinery Limited

Luffing Jib Crane evolved to equip "Auxiliary Jib"

Luffing Jib Crane

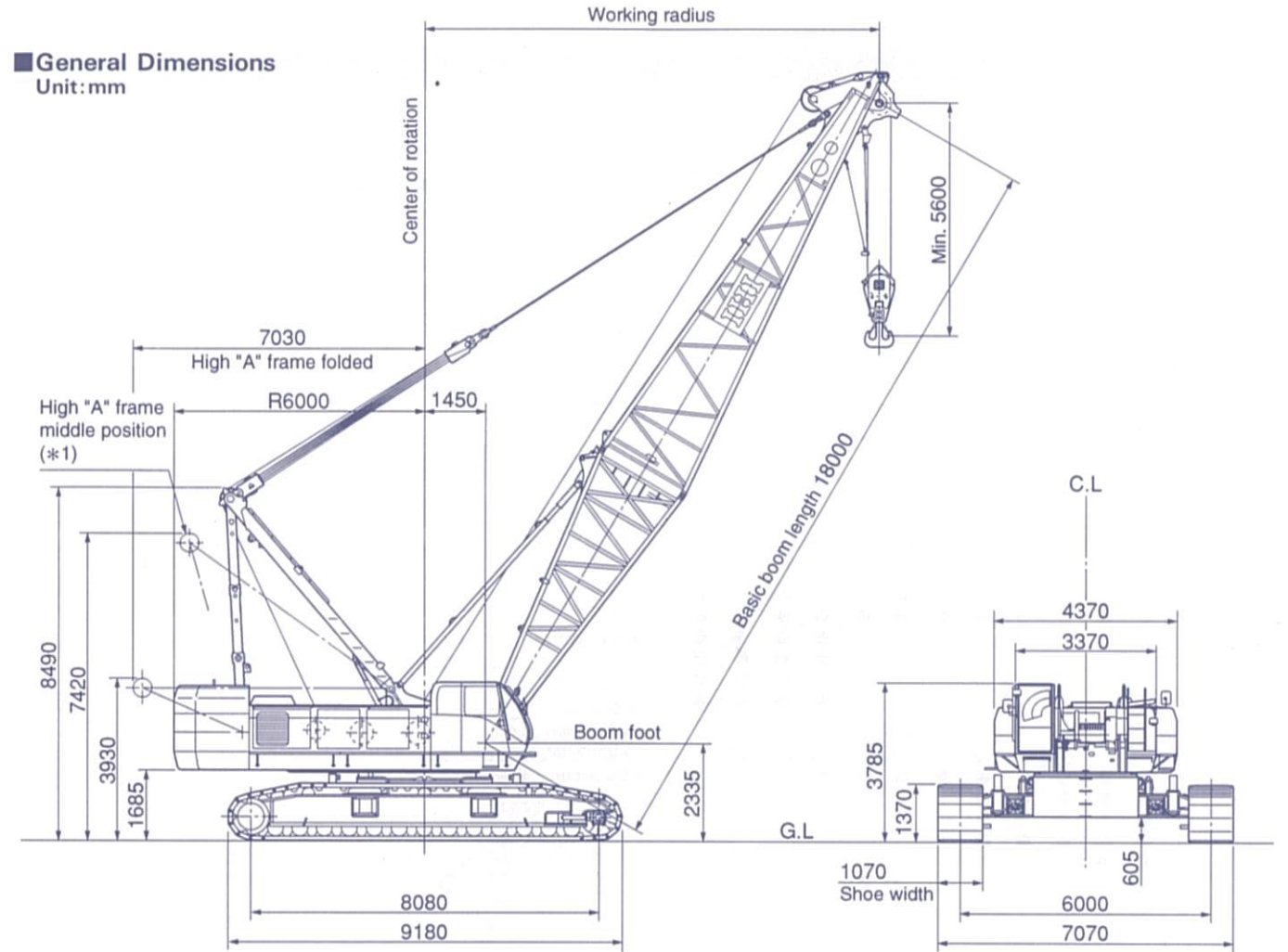


Post Crane

Selections are available from:
 1) 50-ton lifting with Post
 2) 25-ton lifting with Luffing Jib
 3) 13.5-ton lifting with Auxiliary Jib
 Simultaneous lifting by Post and Auxiliary Jib is not permitted.

Middle Equalizer for Luffing Jib lifting is tentatively stowed on inner post when the Luffing Jib is dismantled.

General Dimensions Unit: mm



Specifications

Performance	
Swing speed	1.7min ⁻¹ (1.7rpm) [Constant swing speed 0.6min ⁻¹ (0.6rpm)---optional]
Travel speed	≈0.9/0.6km/h
Gradability	30% (16.7°)
Engine	
Make	HINO MOTOR
Model	K13C-TJ (with turbo) diesel engine
Type	4-cycle, water cooled, straight 6-cylinder, direct injection
Rated output	235kw/2000min ⁻¹ (320PS/2000rpm)
Total piston displacement	12.882 ℓ
Fuel tank capacity	450 ℓ
Battery	DC12V×150AH×2pcs.
Main hoist system (Front left axle, also used for hoisting tower jib)	
Hydraulic motor	Variable displacement axial piston type
Reduction gear	Two-stage planetary gear
Hoist drum	Single drum driven independently by hydraulic motor, lebus grooved drum
Clutch	Internal expanding band type
Brake	External contracting band type
Drum lock	Ratchet lock
Aux. hoist system (Rear left axle)	
Hydraulic motor	Variable displacement axial piston type
Reduction gear	Two-stage planetary gear
Hoist drum	Single drum driven independently by hydraulic motor, lebus grooved drum
Clutch	Internal expanding band type
Brake	External contracting band type
Drum lock	Ratchet lock
Boom hoist system (Rear right axle, also used for hoisting tower post)	
Hydraulic motor	Variable displacement axial piston type
Reduction gear	Three-stage planetary gear
Hoist drum	Dual drums driven independently by hydraulic motor, lebus grooved drum
Clutch	Internal expanding band type
Brake	Wet type multi-disk
Drum lock	Ratchet lock

*The travel speed changes depending on the load.

Standard equipment

- Instrument for crane
 - Engine tacho meter (Hour meter)
 - Hydraulic oil pressure gauge (for control circuit)
 - Fuel level gauge
 - Engine coolant thermo indicator (indicated bar graph in OK monitor)
- Lighting for crane
 - 2-Work light (24v×80w)
 - 1-Room light (24v×10w)
- Safety devices
 - Automatic stop for hook overwinding
 - Automatic stop for boom overwinding
 - 2nd boom stop device (non-resettable)
 - Telescopic boom limit stop
 - Swing lock
 - Main and auxiliary drum lock
 - Boom hoist drum lock
 - Safety valve for hydraulic circuit
 - Clutch engage pin on main and auxiliary winch
 - Counter balance valve
 - Control lever locking device
 - Traction lever lock
 - Automatic braking system
 - Engine start voice alarm
- Other standard accessories
 - Front windshield wipers (intermittent, w/washer)
 - Roof wipers (intermittent, w/washer)
 - Sunvisor
 - Sun shade
 - Storage pouch
 - Tool box
 - Reclining operator's seat
 - Floor mat
 - Steps for operator's cab
 - Radio
 - Cigarette lighter
 - Ash tray
- Large rear view mirrors (right/left)
- Signal horn
- Electric fuel filling pump
- Swing warning flasher & alarm
- Travel warning alarm
- High "A" frame erecting device
- Low-noise cab
- Bronze tinted glass
- Wire mesh boom workway (for inner boom)
- Foot rest
- Electric type engine throttle
- Foot pedal-type engine throttle
- Ultra low-speed control (w/selector switch for coupling with engine speed or independent)
- Hydraulic assist brake for main and aux. winch
- Winch mode selector for main and aux. winch
- Rope guide roller on outer boom
- Plug socket
- Loud speaker
- Dial-type winch speed adjustment device (main, aux. and boom)
- Pump power shift device
- Emergency engine stop switches
- Foot pin cylinder device
- Fulcrum plate for erecting attachment (also used as climbing step to operator's cabin)

Optional equipment

- Moment limiter(* 2)
- Optional boom canthus setting device (included in moment limiter)
- Automatic stop system (activated when near the marginal angle or when load is 90%)
- Built-in type air conditioner
- Large-sized storage bin

(* 1) High "A" frame middle position when mast is in use.
 (* 2) Optional depend on region

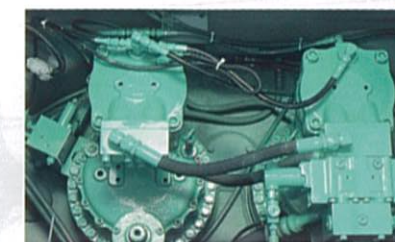
Individual masses and outline dimensions

Main part name	Mass (tons)	Q'ty	dimensions(m)L×W×H																						
Main body (without "A" frame, ropes, axles and crawlers)	(31.9)	(1)	7.95×3.37×3.17																						
Main body (with "A" frame, and without ropes, axles and crawlers)	(36.2)	(1)	9.60×3.37×3.32																						
Main body (with "A" frame, ropes, and axles, and without crawlers)	47.3	1	10.17×3.37×3.33																						
Crawler	18.9	2	9.18×1.07×1.37																						
Counterweight, weight for body	94.0	9	See below.																						
Counterweight arrangement and dimensions (mm)	<table border="1"> <thead> <tr> <th colspan="2">Weight (tons)</th> </tr> </thead> <tbody> <tr><td>①</td><td>18.5</td></tr> <tr><td>②</td><td>18.6</td></tr> <tr><td>③</td><td>9.8</td></tr> <tr><td>④</td><td>7.5</td></tr> <tr><td>⑤</td><td>9.6</td></tr> <tr><td>⑥</td><td>6.2</td></tr> <tr><td>⑦</td><td>7.8</td></tr> <tr><td>⑧</td><td>8.0</td></tr> <tr><td>⑨</td><td>8.0</td></tr> <tr><td>Total</td><td>94.0</td></tr> </tbody> </table>			Weight (tons)		①	18.5	②	18.6	③	9.8	④	7.5	⑤	9.6	⑥	6.2	⑦	7.8	⑧	8.0	⑨	8.0	Total	94.0
Weight (tons)																									
①	18.5																								
②	18.6																								
③	9.8																								
④	7.5																								
⑤	9.6																								
⑥	6.2																								
⑦	7.8																								
⑧	8.0																								
⑨	8.0																								
Total	94.0																								
Inner boom (with boom limit stop)	3.1	1	7.75×2.65×2.4																						
Outer boom (with pendant rope)	3.4	1	11.3×2.45×2.35																						
3m insert boom (with pendant rope)	0.85	As required	3.15×2.45×2.35																						
6m insert boom (with pendant rope)	1.35	As required	6.15×2.45×2.35																						
9m insert boom (with pendant rope)	1.8	As required	9.15×2.45×2.35																						
Equalizer	0.8	1	2.27×1.14×0.36																						
Inner jib (with jib strut pendant rope)	1.1	1	6.95×1.35×1.05																						
Outer jib (with pendant rope)	0.5	1	6.85×1.07×1.05																						
1m aux. jib	0.35	1	1.99×0.64×0.4																						
6m insert jib (with pendant rope)	0.25	As required	6.1×0.98×1.05																						
200ton hook	2.7	1	0.85×2.36×1.01																						
150ton hook	2.4	1	0.85×2.21×0.82																						
100ton hook	1.4	1	0.73×1.97×0.54																						
60ton hook	1.2	1	0.8×1.77×0.5																						
13.5ton hook (shared with luffing jib)	0.6	1	0.46×1.52×0.46																						
Inner post (with inner post yoke and stabilizer)	5.3	1	7.75×2.65×2.4																						
Tower top	2.9	1	4.86×3.02×2.35																						
3m insert post (shared with 3m insert boom)	0.95	As required	3.15×2.45×2.35																						
6m insert post (shared with 6m insert boom)	1.50	As required	6.15×2.45×2.35																						
9m insert post (shared with 9m insert boom)	2.10	As required	9.15×2.45×2.35																						
Middle equalizer	0.3	1	1.21×0.76×0.33																						
Strut	2.5	set	7.42×2.07×1.15																						
Tower inner jib (with jib limit stop)	1.82	1	9.15×2.57×1.5																						
Tower outer jib (with pendant rope)	1.1	1	9.4×2.1×1.61																						
3m tower insert jib (with pendant rope)	0.32	As required	3.1×1.6×1.5																						
6m tower insert jib (with pendant rope)	0.54	As required	6.1×1.6×1.5																						
9m tower insert jib (with pendant rope)	0.74	As required	9.1×1.6×1.5																						
50ton hook (for post operations)	1.0	1	0.8×1.9×0.43																						
25ton hook (shared with post and jib operations)	1.0	1	0.8×1.61×0.35																						

◆Diagrams shown have been drawn for catalog purposes and may differ from actual products.
◆Specifications are subject to change without notice due to technical improvements or modifications.

OPERATOR ORIENTED DESIGN ENSURES SAFE AND EFFECTIVE OPERATION OF GREAT 200-TON

Highest rope speeds in this class 110 meter/minute Load Hoist/Lowering



●Powerful Swing

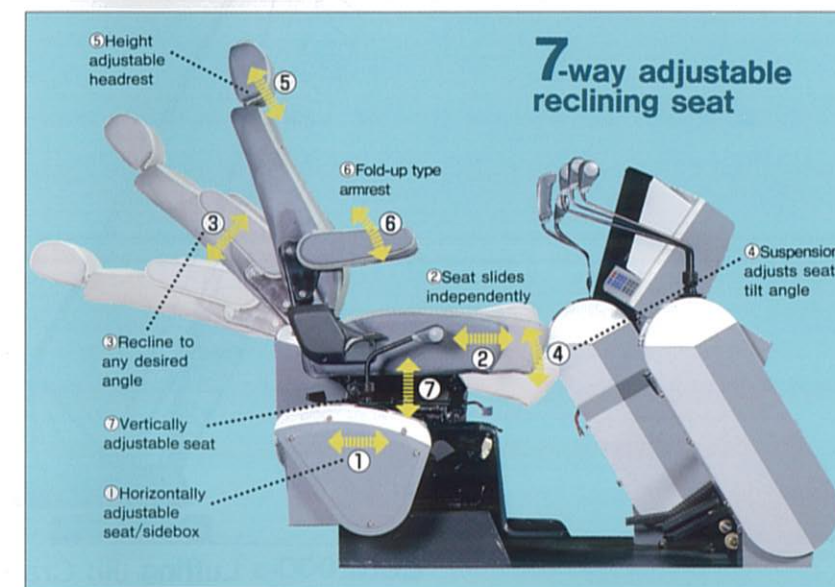
Powerful double-hydraulic-motor for swing motion is independent from all other operations.



●Full Power-Efficient Hydraulic Control System

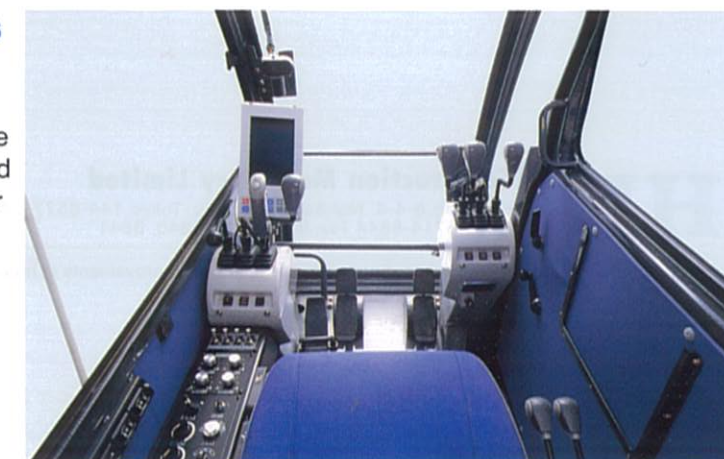
Two variable displacement pumps and one gear pump incorporated into engine provide the most effective usage of engine output. Hydraulic flow and pressures are automatically regulated to deliver high flow and low pressure for lighter loads, low flow and high pressure under heavy loading.

Hydraulic Motors to drive main drum, auxiliary drum, the third drum and boom hoist/lowering drum are independently controlled to match each operating speeds. (The third drum is optional for application other than the luffing jib crane)



●Wide visibility and deluxe control stands

Dazzle free front glass, radio, intermittent windshield wiper, sunshade, stowbox are standard equipped. Levers, pedals, switches are logically located for safe and easy operation. Engine throttle switch is integrated on swing lever grip. Winch mode switch (select foot or automatic) is located on main and aux. hoist levers.



●Dial system controller

Hydraulic pump delivery volume is controlled in conjunction with engine speed supplemented by and independent swash-plate angle control dial. The device provides easy, accurate and precise inching work.

